

TECHNICAL DATA

Electrical

Impedance 50 Ω
 Frequency range 0~3 GHz
 Withstanding voltage 500 V
 Insulation resistance ≥3000MΩ

Mechanical & Environmental

Durability (matings) >500
 Temperature range -55 °C ~ +165 °C
 RoHS Compliant Yes

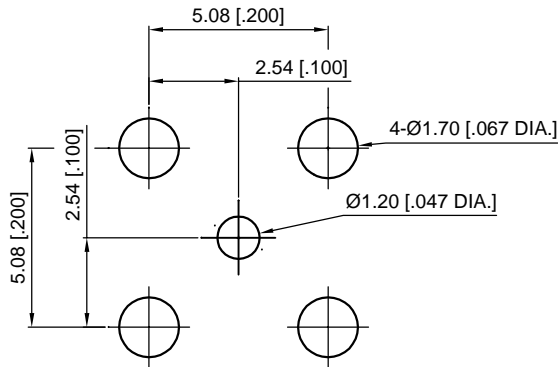
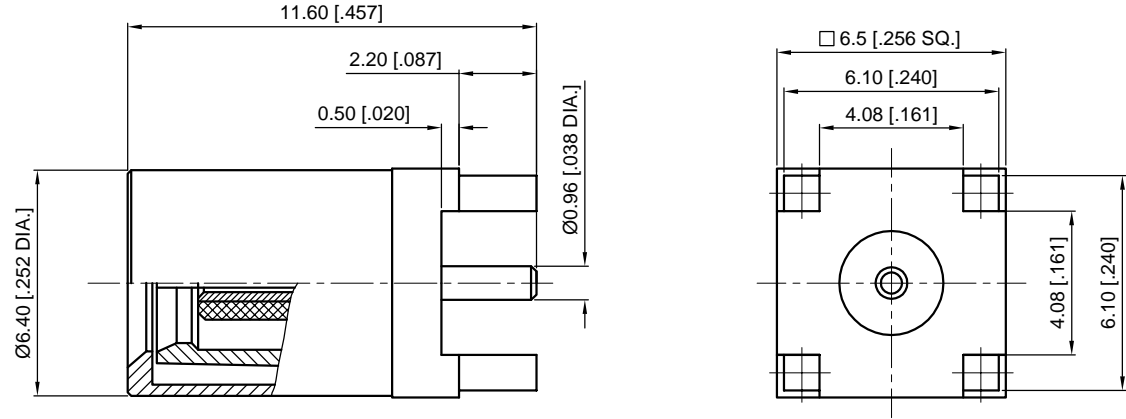
Material & Finish

Body Brass, Gold-plated
 Pin Contact Phosphor Bronze, Gold-plated
 Insulator PTFE

Interface Standards

SMB IEC-60169

REVISIONS				
REV	DESCRIPTION OF REVISION	ECN No.	DATE	APPROVED
A	INITIAL RELEASE	---	02/14/2018	M. Dong
B	DIMENSIONS CHANGED	---	03/14/2018	M. Dong
C	DIMENSIONS CHANGED	---	03/30/2018	M. Dong
D	DIMENSIONS CHANGED	---	03/30/2018	M. Dong



Recommended Mounting Hole

NOTES:

- ALL SPECIFICATIONS ARE SUBJECT TO CHANGE WITHOUT NOTICE AT ANY TIME
- UNLESS OTHERWISE SPECIFIED ALL DIMENSIONS ARE NOMINAL.

UNLESS OTHERWISE SPECIFIED, DIMENSIONS ARE IN MILLIMETERS (INCHES). UNLESS OTHERWISE SPECIFIED DIMENSIONAL TOLERANCES ARE: .XX ±0.13 [0.005] X ±0.20 [0.008] X ±0.50 [0.019] ANGULAR TOLERANCES ARE: ALL= ±1° DO NOT SCALE DRAWING PROJECTION:	
---	--

DRAWN:	L. Ma	03/14/2018
CHECKED:	J. Zhu	03/14/2018
APPROVED:	M. Dong	03/14/2018

TITLE:
SMB Straight Plug (Female Center Contact) for PCB



Cmppter Electronics Co., Ltd. www.cmppter.com

PART No.:
70-03-5L2-071

SIZE: A4	SCALE: 5:1	SHEET: 1/1	REV: D
-------------	---------------	---------------	-----------