

TECHNICAL DATA

Electrical

Impedance 50 Ω
 Frequency range 0~3 GHz
 Withstanding voltage 500 V
 Insulation resistance ≥3000MΩ

Mechanical & Environmental

Durability (matings) >500
 Temperature range -55 °C ~ +165 °C
 RoHS Compliant Yes

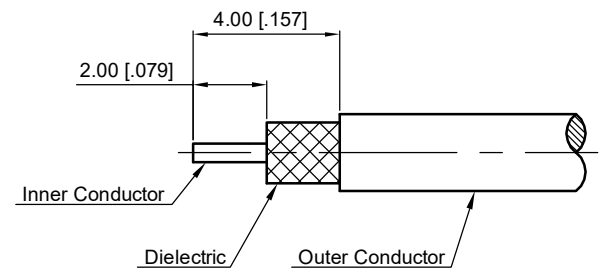
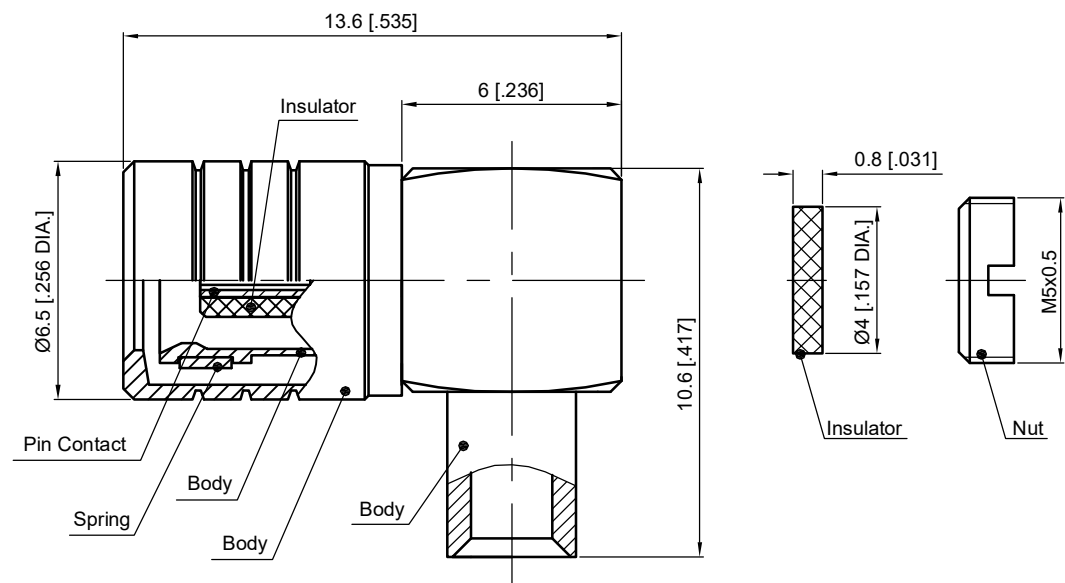
Material & Finish

Body Brass, Gold-plated
 Pin Contact Phosphor Bronze, Gold-plated
 Nut Brass, Gold-plated
 Spring Beryllium Copper Alloy, Gold-plated
 Insulator PTFE

Interface Standards

SMB IEC-60169

REVISIONS				
REV	DESCRIPTION OF REVISION	ECN No.	DATE	APPROVED
A	INITIAL RELEASE	—	11/12/2018	M. Dong
B	ADD MORE DETAIL DIMENSIONS	—	02/22/2019	M. Dong



Recommended Cable Stripping Dimensions

- NOTES:
- ALL SPECIFICATIONS ARE SUBJECT TO CHANGE WITHOUT NOTICE AT ANY TIME
 - UNLESS OTHERWISE SPECIFIED ALL DIMENSIONS ARE NOMINAL.

UNLESS OTHERWISE SPECIFIED, DIMENSIONS ARE IN MILLIMETERS [INCHES]. UNLESS OTHERWISE SPECIFIED DIMENSIONAL TOLERANCES ARE: .XX ±0.13 [.005" .X ±0.20 [.008" X ±0.50 [.019" ANGULAR TOLERANCES ARE: ALL= ±1° DO NOT SCALE DRAWING PROJECTION:	DRAWN:	L. Ma	11/12/2018
	CHECKED:	J. Zhu	11/12/2018
	APPROVED:	M. Dong	11/12/2018
TITLE:		SMB Right Angle Plug (Female Center Contact) Crimp for .086/RG405 Cable	

CMP TER
 Cmpter Electronics Co., Ltd. www.cmpter.com

PART No.: **70-13-2M11-082**

SIZE: A4	SCALE: 5:1	SHEET: 1/1	REV: B
----------	------------	------------	--------