

REV	DESCRIPTION OF REVISION	ECN No.	BY	DATE	APPROVED
A	INITIAL RELEASE	—	H. Xiao	11/01/10	11/01/10

TECHNICAL DATA

Electrical data

Impedance	50 Ω
Frequency range	0~40 GHz
VSWR	1.20:1
Contact resistance	
-centre contact	≤5mΩ
-outer contact	≤2.5mΩ
Insulation resistance	≥1000MΩ

Mechanical data

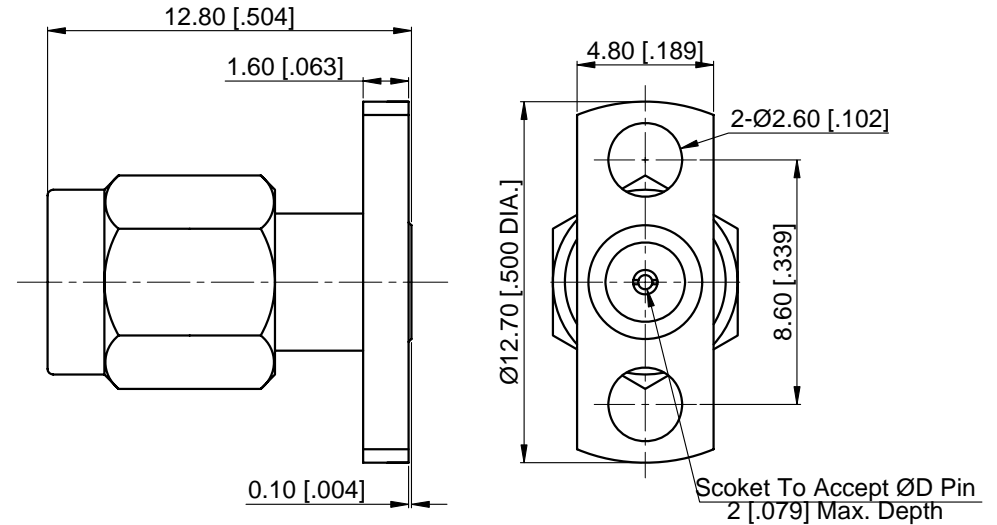
Temperature range	-55 °C ~ +165 °C
Durability (matings)	>500

Material data

Body	Stainless Steel (SU303), Passivated
Pin Contact	Beryllium Copper Alloy, Gold-plated
Insulator	PEI, PTFE

Interface Standards


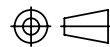
SSMA	MIL-STD-348A
------	--------------



Part Number	D
D60-03-9E5-005A	0.23 [0.009]
D60-03-9E5-005B	0.30 [0.012]
D60-03-9E5-005C	0.38 [0.015]
D60-03-9E5-005D	0.46 [0.018]
D60-03-9E5-005E	0.51 [0.020]

NOTES:

- ALL SPECIFICATIONS ARE SUBJECT TO CHANGE WITHOUT NOTICE AT ANY TIME
- CUSTOMER OUTLINE DRAWING FOR REFERENCE ONLY

DRAWN: H. Xiao 11/01/10	TITLE: SSMA Straight Male, 2 Hole Flange, Accept Pin	 www.cmppter.com			
ENGINEER: YF. Zhu 11/01/10					
APPROVED: M. Dong 11/01/10		 DIMENSIONS IN MILLIMETERS (mm)			
TOLERANCE UNLESS OTHERWISE SPECIFIED	PART No.: D60-03-9E5-005	SIZE: A4	SCALE: 4:1	SHEET: 1/1	REV: A
X ±0.50 [0.019"]					
.X ±0.20 [0.008"]					
.XX ±0.10 [0.004"]					
ANGLES ±1°					