

TECHNICAL DATA

Electrical

| | |
|-----------------------|-----------------------|
| Impedance | 50 Ω |
| Frequency range | 0~ 3 GHz |
| Withstanding voltage | 500 V |
| Insulation resistance | ≥5x10 ³ MΩ |

Mechanical & Environmental

| | |
|----------------------|------------------|
| Durability (matings) | >500 |
| Temperature range | -55 °C ~ +165 °C |
| RoHS Compliant | Yes |

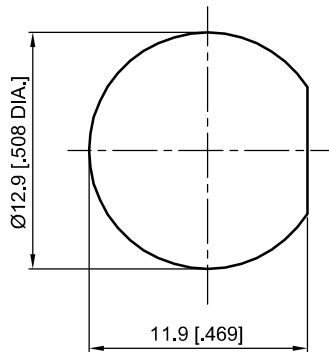
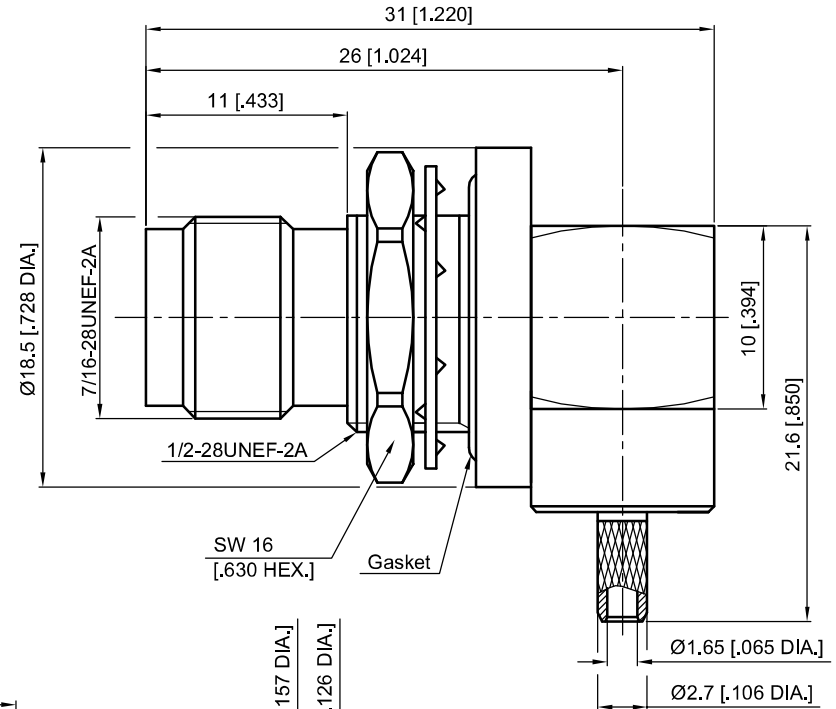
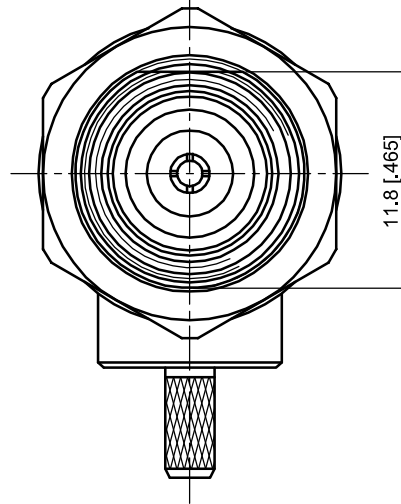
Material & Finish

| | |
|---------------|---------------------------------|
| Body | Brass, Nickel-plated |
| Pin Contact | Phosphor Bronze , Gold-plated |
| Washer | Phosphor Bronze , Nickel-plated |
| Fastening Nut | Brass, Nickel-plated |
| Gasket | Silicone Rubber |
| Insulator | PTFE |

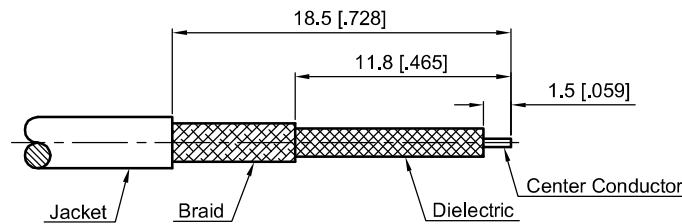
Interface Standards

| | |
|-----|-----------|
| TNC | IEC-60169 |
|-----|-----------|

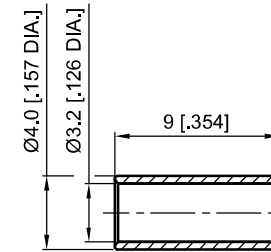
| REVISIONS | | | | |
|-----------|---------------------------------|---------|------------|----------|
| REV | DESCRIPTION OF REVISION | ECN No. | DATE | APPROVED |
| A | INITIAL RELEASE | --- | 06/01/2017 | M. Dong |
| B | DIMENSIONS CHANGED | --- | 07/21/2017 | M. Dong |
| C | TITLE CORRECTED | --- | 10/19/2017 | M. Dong |
| D | CRIMP FERRULE DIMENSION CHANGED | --- | 11/01/2017 | M. Dong |



Recommended Mounting Hole



Cable Stripping Dimensions



1. CRIMP FERRULE
HEX. CRIMP TOOL SIZE: 3.25 [0.128]

NOTES:

- ALL SPECIFICATIONS ARE SUBJECT TO CHANGE WITHOUT NOTICE AT ANY TIME
- UNLESS OTHERWISE SPECIFIED ALL DIMENSIONS ARE NOMINAL.

| | |
|--|--|
| UNLESS OTHERWISE SPECIFIED, DIMENSIONS ARE IN MILLIMETERS (INCHES). UNLESS OTHERWISE SPECIFIED DIMENSIONAL TOLERANCES ARE: .XX ±0.13 [0.005"] .X ±0.20 [0.008"] X ±0.50 [0.019"] ANGULAR TOLERANCES ARE: ALL= ±1° DO NOT SCALE DRAWING | DRAWN: L. Ma 11/01/2017 CHECKED: J. Zhu 11/01/2017 APPROVED: M. Dong 11/01/2017 |
| PROJECTION: | TITLE: TNC Right Ange Waterproof Bulkhead Female Crimp for LMR100/RG174/RG316 Cable |

CMPPTER[®]
Cmppter Electronics Co., Ltd. www.cmppter.com

PART No.:
80-12-1D00-056

| | | | |
|----------|--------------|------------|--------|
| SIZE: A4 | SCALE: 2.5:1 | SHEET: 1/1 | REV: D |
|----------|--------------|------------|--------|